

UNIVERSITY of A SIKU ANGLI



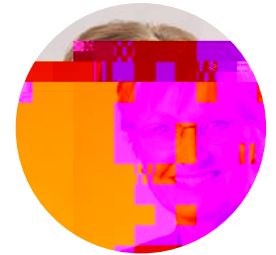
Dear UAA Community:

I am delighted to present UAA's new energy policy. UAA is committed to responsible energy and resource management as part of an overall environmental strategy. This policy will help us take steps to minimize energy use, minimize energy costs, reduce the environmental impact of harmful emissions, and limit the depletion of non renewable resources.

This new energy policy is just one part of a comprehensive
WYWXEMREFMPMX] TVSKVEQ MRGPYHMRK RI[FYMPHMRK HIWMKR
to reduce UAA's carbon footprint.

Take a look inside this plan and see how we're going to make UAA a "greener" place to learn, work and live, and how you can contribute to reducing energy consumption at UAA. To learn more about what you can do

XS QEOI 9%% E QSVI WYWXEMREFPI 9RMZIVWMX] ZMWMX XLI 3J½ G
Web site at www.uaa.alaska.edu/sustainability.



Wishing you the best,





Chancellor




UAA POLICY STATEMENT

UAA is committed to
responsible energy and resource



.....
Introduction



activities should be concentrated in as few buildings as possible.

– The Anchorage

ERH VIXVS $\frac{1}{2}$ XW *EGMPMXMIW ERH 'EQTYW 7IVZMGIW [MPP TIVMSHMGEPP] YTHEXI



Housing Administration or the Facilities Maintenance Director must approve in writing any use of space heaters.

heater is necessary for adequate warmth, this may indicate that the central heating system needs repair. University Facilities Maintenance must be consulted through the Building

All space heaters used on campus

QYWX QIIX 1/2 VERKIV SV (ITEVXQIRX ,IEH MJ XLI
safety standards central heating system is incapable of
EW GPEWWM 1/2 IJXMRK GSQJSVX VIUYMVIQIRXW WII
the National GSQJSVX VERKIW EFSZI -J ETTVSZIH

Fire Protection Association. No

to use a space heater, it must be shut off when the owner is not physically

liquid fueled space

TVIWIRX MR XLI SJ 1/2 GI WTEGI (MVI GXSV
of Facilities Maintenance should also

LIEXIVW I

be contacted through the Building

OIVSWIRI LIEXIVW

1EREKIV SV (ITEVXQIRX ,IEH MJ E

shall be used in

space heater is to be used to offset

any residential,

WVWVMZV EMV GSRHM XMSRMRK

SJ 1/2 GI GPEWWM

research buildings.

Staff Tips: If you are too hot or too cold and your temperatures are within the appropriate range don't call Maintenance; you are in the "sweet zone", and your department will be charged for the service call. To stay warm wear a warm winter hat and gloves.

)PIGXVMGEP WTEGI LIEXIVW OYWX OIIX
XLI JSPPS[MRK WIZIR WTIGM 1/2 GEXMSRW
1 FI 90 ETTVSZIH IPIQIRXW
XLEX EVI TVSXIGXIH JVSQ GSRXEGX
FI XMPX TVSSJ [LIR XMTTTH SZIV LIEXIV
KSIW SJBI XLIVQSWXEX GSRXVSPPIH
5 LEZI SZIVLIEX TVSXIGXIMSR
JYWI TVSXIGXIEH GSRHM - 7

)RIVK] IJ 1/2 GMIRG] MW EPWS MQTSVXERX
)PIGXVMG WTEGI LIEXIVW EVI E ZIV] GSWXP]
means of heating. If a member of the campus community feels that a space



.....
Conclusion

IRIVK] YWI XS XLI 9RMZIVWMX] GSQQYRMX] /IIT

4PIEWI GSRXEGX XLI %WWSGMEXI (MVGXSV SJ *
7IVZMGIW EX JSV UYIWMSRW SV QSVI M

